



Planet Software Pty Ltd
183 Melbourne Street
NORTH ADELAIDE SA 5006

ACN 087 918 232

Phone +61 8 8267 6199
Fax +61 8 8267 6399
www.planetsoftware.com.au

Appointment Mover

Overview

February 2006

Table of Contents

Introduction	3
What does it do?	3
Versions	4
Outlook Form.....	4
Command-Line Executable	5
Exchange 2003 Version	5
Disclaimer	6

Introduction

Planet Software's Outlook Appointment Mover was developed to help organisations manage issues caused by changes to Time Zone and Daylight Saving Time.

Adjusting the system's clock, Time Zone or DST setting is not part of the functionality of Appointment Mover.

What does it do?

Appointment Mover moves a range of appointments in a calendar forward or backward a number of minutes (usually +/- 60 minutes). The range matches the date/time range of the adjustment. For example, if DST was being extended by a week, the date range to adjust would be just that week.

Appointments that are part of a recurring series will be moved individually and therefore will appear as "exceptions" to the recurrence pattern.

Versions

The application is supplied in three formats, each with its own method of use. The formats are:

1. *Outlook form* – For one-off updates and Public Folder calendars.
2. *Command-line executable (VB6 and .NET 2 versions)* – For login scripts and as part of the Patch rollout.
3. *Exchange 2000/2003 Server-based application (using .NET v2 Windows forms technology)* – For rapid, centralised adjustments.

Details of the formats follow:

Outlook Form

This version is supplied as an Outlook form in an “FDM” file. It is published to a folder and launched from Outlook through the “Actions” menu.

Choose the dates where your appointments are incorrect

Start Date: Sun 27/03/2005 2:00 AM Any appointments on or after this date... **218 Days**

End Date: Sun 30/10/2005 3:00 AM until (and including) this date...

Time Shift: -60 have this number of minutes added to their start time...

Choose the calendar folder you wish to adjust:

Choose the Calendar...

Move recurring appointments

Move non-recurring appointments

Process calendar Calendar Name

This form will move all appointments within the date range. If the Time Shift (in minutes) is positive, appointments will move forward. If Time Shift is negative, appointments will move backward.
A Word document will be generated during the process. This should be printed and/or filed for later reference.

(c) 2004 Planet Software Pty Ltd
This software is not free. If you use it without purchasing it, you are breaking copyright law.
To purchase, email:
info@planetsoftware.com.au

Planet Software accepts no responsibility for the consequences of this software or its use.

This version is intended for one-off adjustments to individual calendars, and for fixing shared calendars (for example in Public Folders).

As it processes a calendar, it generates a Word document with details of each appointment moved.

Command-Line Executable

These versions are designed to be run as part of a login script. The executable is available compiled for VB6 runtime or .NET v2 use.

VB6 Parameters:

```
/s 12-03-2002 2:00am /e 12-4-2003 2:00am /a -60 /applog \\servername\test
/userlog \\servername\test
/s and /e are the start and end times respectively
/a is the adjustment to make in minutes
/applog is where the application event log will be stored
/userlog is where the user event log will be stored
```

.NET 2.0 Parameters (as above plus):

```
/t - If this optional flag is specified, any appointment moved will have
the subject line modified to include the original time of the appointment.
The text that follows the flag is the time prefix text.
/p - Profile to use (optional)
/c - Full Calendar Name to use, e.g. Mailbox - John Jones\Test Calendar
```

Note that the app does nothing if an existing entry for this user is in the *userlog* folder.

To run multiple times against one user's calendar, you need to delete the post item corresponding to the user.

Example syntax:

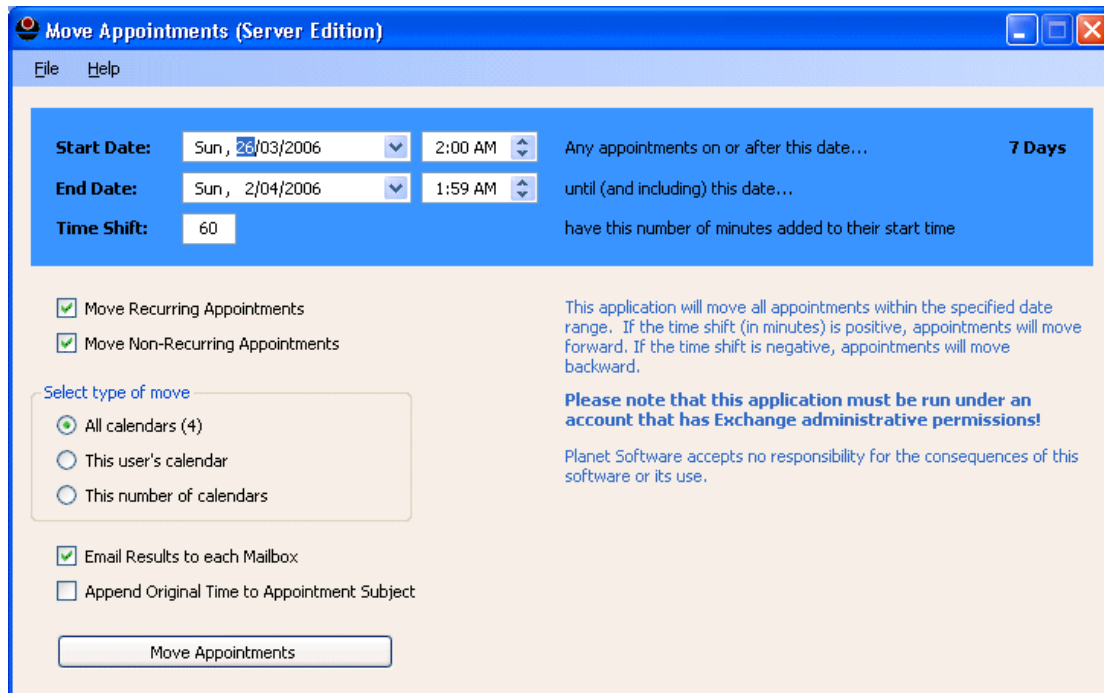
```
AppointmentMover /s 27-10-2005 2:00am /e 30-3-2005 2:00am /a -60 /applog
\\servername\test /userlog \\servername\test
```

Exchange 2003 Version

This requires the .NET v2.0 framework to be installed on the Exchange server. This Windows forms application will move all appointments in a date range for all users **on that server**.

It is intended to be used by the Exchange Administrator.

This version supports emailing users as their calendar is updated and appending the original time to the appointment's subject.



.NET 2.0 Security Notes for Command-Line Executable

The application requires the following permissions in order to run properly:-

System.Security.Permissions.EnvironmentPermission

System.Security.Permissions.ReflectionPermission

System.Security.Permissions.RegistryPermission

System.Security.Permissions.SecurityPermission

System.Security.Permissions.UIPermission

A typical use of the command-line executable would be in a login script for a user. It is suggested that in this situation you would use the caspol tool before the appointment mover in the aforementioned script, to assign the appropriate permissions to the appointment mover before it is run.

Disclaimer

Although this software has been used with great success by many companies over the past 7 years, Planet Software takes no responsibility for any consequences of its use.

A successful implementation will require planning and testing. We do not recommend running this software on a production server without thorough testing.